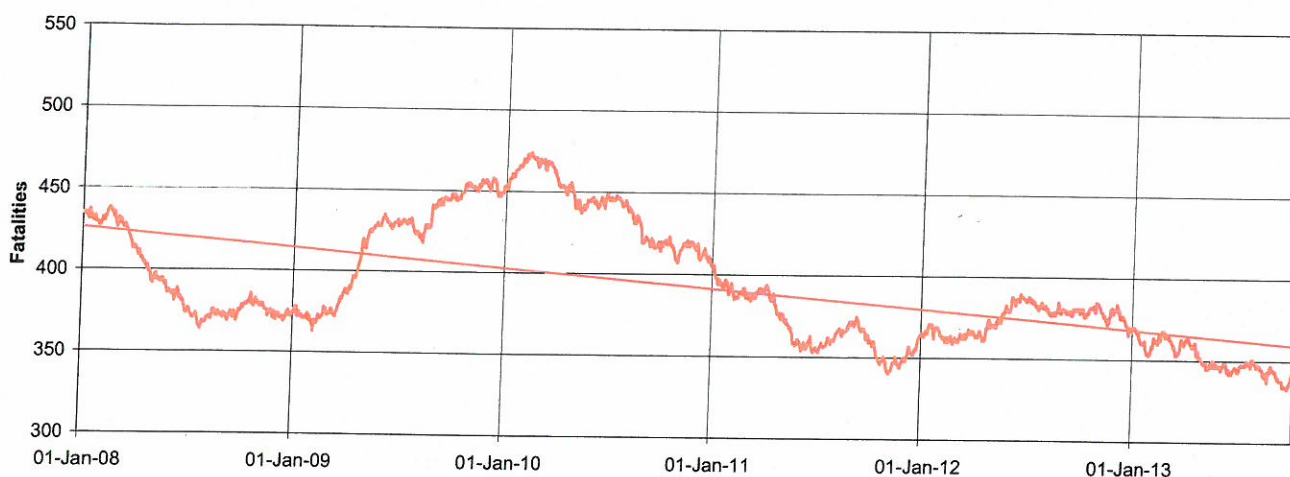


**NSW Road Toll Statistics:** Up to and including 09 October 2013

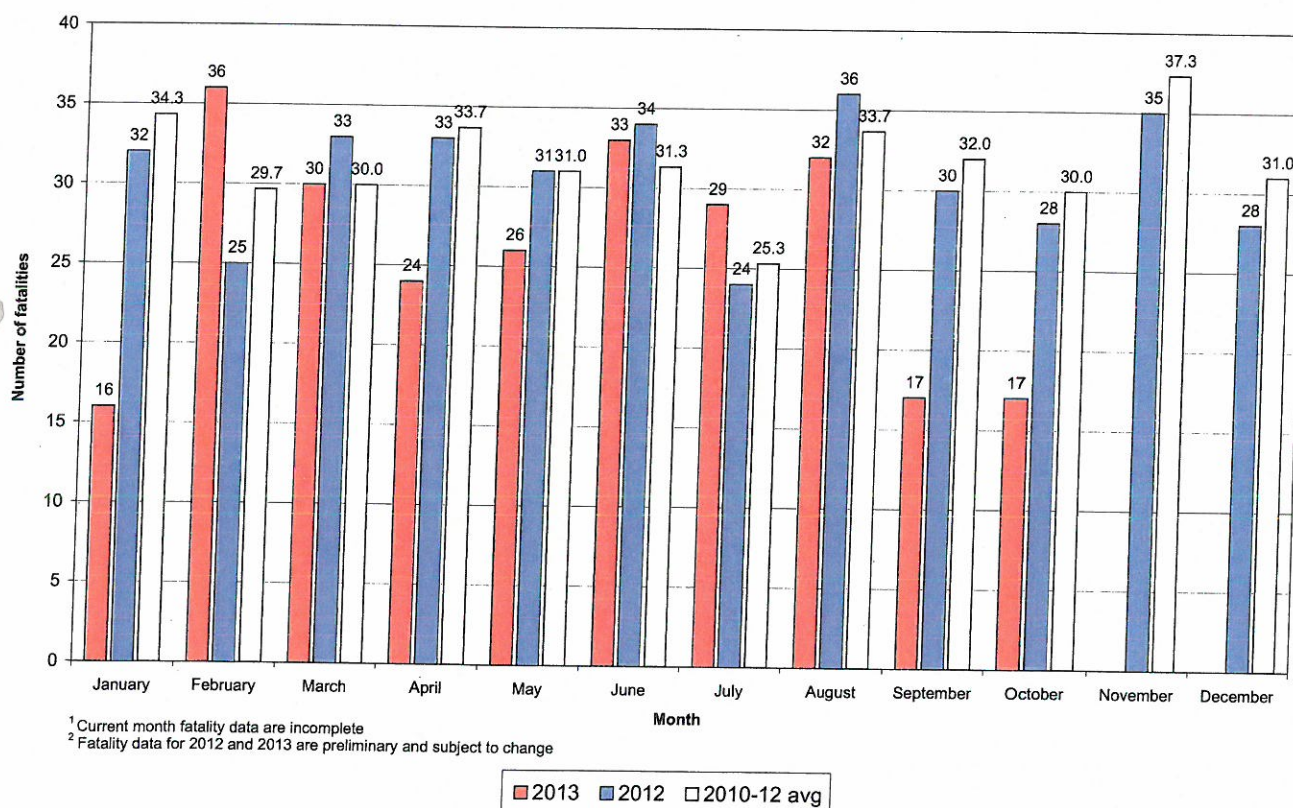
	2013	2012	+/-	% change
Calendar year to date	260	286	-26	-9%
October to date	17	8	9	113%
12-month period to date	343	377	-34	-9%

## NSW ICAC EXHIBIT

**Fatalities 12-month moving total - 2008 to date**



**Road fatality comparative statistics by month<sup>1</sup> for 2012<sup>2</sup>, 2013<sup>2</sup> and the average for the 3-year period 2010-2012<sup>2</sup>**

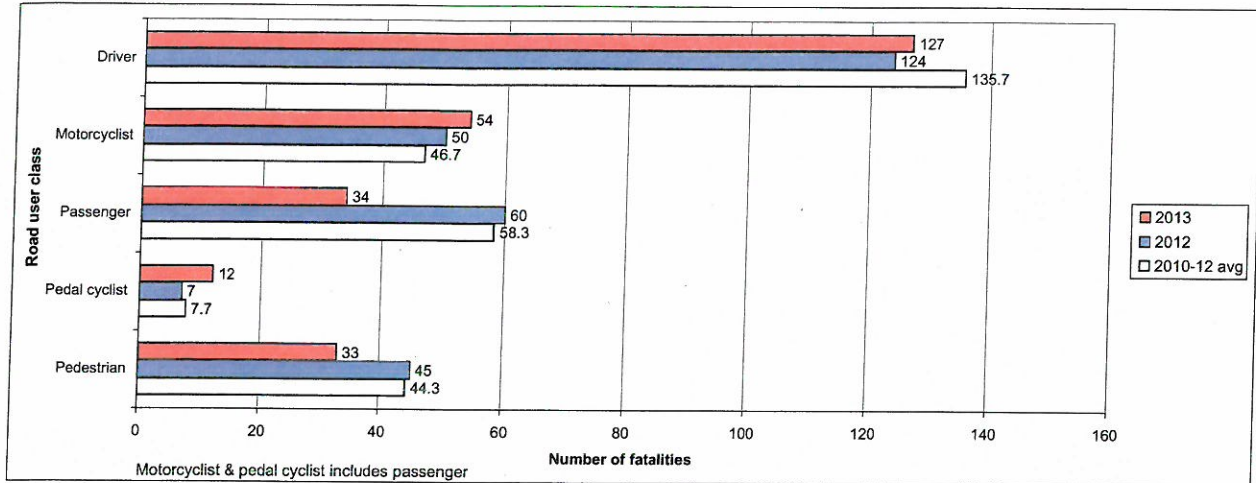


Preliminary Data - Note: Fatalities will be removed from statistics if subsequent Police or Coronial investigation shows that they did not fall within National reporting guidelines. Fatalities will be added from a crash occurring prior to today's date where a person subsequently dies within 30 days or the crash is reported late. Fatalities are deaths which occurred within 30 days of a crash as a result of injuries received in the crash. The crash must have occurred within the surveyed road reserve.

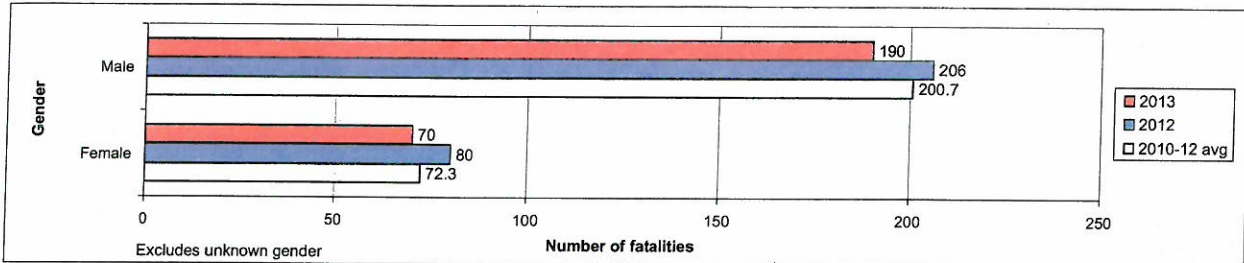
# NSW ICAC EXHIBIT

Road fatality comparative statistics for the period 1 January to 09 October 2013, 2012, 2011, 2010, 2009, 2008, 2007, 2006, 2005, 2004, 2003, 2002, 2001, 2000, 1999, 1998, 1997, 1996, 1995, 1994, 1993, 1992, 1991, 1990, 1989, 1988, 1987, 1986, 1985, 1984, 1983, 1982, 1981, 1980, 1979, 1978, 1977, 1976, 1975, 1974, 1973, 1972, 1971, 1970, 1969, 1968, 1967, 1966, 1965, 1964, 1963, 1962, 1961, 1960, 1959, 1958, 1957, 1956, 1955, 1954, 1953, 1952, 1951, 1950, 1949, 1948, 1947, 1946, 1945, 1944, 1943, 1942, 1941, 1940, 1939, 1938, 1937, 1936, 1935, 1934, 1933, 1932, 1931, 1930, 1929, 1928, 1927, 1926, 1925, 1924, 1923, 1922, 1921, 1920, 1919, 1918, 1917, 1916, 1915, 1914, 1913, 1912, 1911, 1910, 1909, 1908, 1907, 1906, 1905, 1904, 1903, 1902, 1901, 1900, 1899, 1898, 1897, 1896, 1895, 1894, 1893, 1892, 1891, 1890, 1889, 1888, 1887, 1886, 1885, 1884, 1883, 1882, 1881, 1880, 1879, 1878, 1877, 1876, 1875, 1874, 1873, 1872, 1871, 1870, 1869, 1868, 1867, 1866, 1865, 1864, 1863, 1862, 1861, 1860, 1859, 1858, 1857, 1856, 1855, 1854, 1853, 1852, 1851, 1850, 1849, 1848, 1847, 1846, 1845, 1844, 1843, 1842, 1841, 1840, 1839, 1838, 1837, 1836, 1835, 1834, 1833, 1832, 1831, 1830, 1829, 1828, 1827, 1826, 1825, 1824, 1823, 1822, 1821, 1820, 1819, 1818, 1817, 1816, 1815, 1814, 1813, 1812, 1811, 1810, 1809, 1808, 1807, 1806, 1805, 1804, 1803, 1802, 1801, 1800, 1799, 1798, 1797, 1796, 1795, 1794, 1793, 1792, 1791, 1790, 1789, 1788, 1787, 1786, 1785, 1784, 1783, 1782, 1781, 1780, 1779, 1778, 1777, 1776, 1775, 1774, 1773, 1772, 1771, 1770, 1769, 1768, 1767, 1766, 1765, 1764, 1763, 1762, 1761, 1760, 1759, 1758, 1757, 1756, 1755, 1754, 1753, 1752, 1751, 1750, 1749, 1748, 1747, 1746, 1745, 1744, 1743, 1742, 1741, 1740, 1739, 1738, 1737, 1736, 1735, 1734, 1733, 1732, 1731, 1730, 1729, 1728, 1727, 1726, 1725, 1724, 1723, 1722, 1721, 1720, 1719, 1718, 1717, 1716, 1715, 1714, 1713, 1712, 1711, 1710, 1709, 1708, 1707, 1706, 1705, 1704, 1703, 1702, 1701, 1700, 1699, 1698, 1697, 1696, 1695, 1694, 1693, 1692, 1691, 1690, 1689, 1688, 1687, 1686, 1685, 1684, 1683, 1682, 1681, 1680, 1679, 1678, 1677, 1676, 1675, 1674, 1673, 1672, 1671, 1670, 1669, 1668, 1667, 1666, 1665, 1664, 1663, 1662, 1661, 1660, 1659, 1658, 1657, 1656, 1655, 1654, 1653, 1652, 1651, 1650, 1649, 1648, 1647, 1646, 1645, 1644, 1643, 1642, 1641, 1640, 1639, 1638, 1637, 1636, 1635, 1634, 1633, 1632, 1631, 1630, 1629, 1628, 1627, 1626, 1625, 1624, 1623, 1622, 1621, 1620, 1619, 1618, 1617, 1616, 1615, 1614, 1613, 1612, 1611, 1610, 1609, 1608, 1607, 1606, 1605, 1604, 1603, 1602, 1601, 1600, 1599, 1598, 1597, 1596, 1595, 1594, 1593, 1592, 1591, 1590, 1589, 1588, 1587, 1586, 1585, 1584, 1583, 1582, 1581, 1580, 1579, 1578, 1577, 1576, 1575, 1574, 1573, 1572, 1571, 1570, 1569, 1568, 1567, 1566, 1565, 1564, 1563, 1562, 1561, 1560, 1559, 1558, 1557, 1556, 1555, 1554, 1553, 1552, 1551, 1550, 1549, 1548, 1547, 1546, 1545, 1544, 1543, 1542, 1541, 1540, 1539, 1538, 1537, 1536, 1535, 1534, 1533, 1532, 1531, 1530, 1529, 1528, 1527, 1526, 1525, 1524, 1523, 1522, 1521, 1520, 1519, 1518, 1517, 1516, 1515, 1514, 1513, 1512, 1511, 1510, 1509, 1508, 1507, 1506, 1505, 1504, 1503, 1502, 1501, 1500, 1499, 1498, 1497, 1496, 1495, 1494, 1493, 1492, 1491, 1490, 1489, 1488, 1487, 1486, 1485, 1484, 1483, 1482, 1481, 1480, 1479, 1478, 1477, 1476, 1475, 1474, 1473, 1472, 1471, 1470, 1469, 1468, 1467, 1466, 1465, 1464, 1463, 1462, 1461, 1460, 1459, 1458, 1457, 1456, 1455, 1454, 1453, 1452, 1451, 1450, 1449, 1448, 1447, 1446, 1445, 1444, 1443, 1442, 1441, 1440, 1439, 1438, 1437, 1436, 1435, 1434, 1433, 1432, 1431, 1430, 1429, 1428, 1427, 1426, 1425, 1424, 1423, 1422, 1421, 1420, 1419, 1418, 1417, 1416, 1415, 1414, 1413, 1412, 1411, 1410, 1409, 1408, 1407, 1406, 1405, 1404, 1403, 1402, 1401, 1400, 1399, 1398, 1397, 1396, 1395, 1394, 1393, 1392, 1391, 1390, 1389, 1388, 1387, 1386, 1385, 1384, 1383, 1382, 1381, 1380, 1379, 1378, 1377, 1376, 1375, 1374, 1373, 1372, 1371, 1370, 1369, 1368, 1367, 1366, 1365, 1364, 1363, 1362, 1361, 1360, 1359, 1358, 1357, 1356, 1355, 1354, 1353, 1352, 1351, 1350, 1349, 1348, 1347, 1346, 1345, 1344, 1343, 1342, 1341, 1340, 1339, 1338, 1337, 1336, 1335, 1334, 1333, 1332, 1331, 1330, 1329, 1328, 1327, 1326, 1325, 1324, 1323, 1322, 1321, 1320, 1319, 1318, 1317, 1316, 1315, 1314, 1313, 1312, 1311, 1310, 1309, 1308, 1307, 1306, 1305, 1304, 1303, 1302, 1301, 1300, 1299, 1298, 1297, 1296, 1295, 1294, 1293, 1292, 1291, 1290, 1289, 1288, 1287, 1286, 1285, 1284, 1283, 1282, 1281, 1280, 1279, 1278, 1277, 1276, 1275, 1274, 1273, 1272, 1271, 1270, 1269, 1268, 1267, 1266, 1265, 1264, 1263, 1262, 1261, 1260, 1259, 1258, 1257, 1256, 1255, 1254, 1253, 1252, 1251, 1250, 1249, 1248, 1247, 1246, 1245, 1244, 1243, 1242, 1241, 1240, 1239, 1238, 1237, 1236, 1235, 1234, 1233, 1232, 1231, 1230, 1229, 1228, 1227, 1226, 1225, 1224, 1223, 1222, 1221, 1220, 1219, 1218, 1217, 1216, 1215, 1214, 1213, 1212, 1211, 1210, 1209, 1208, 1207, 1206, 1205, 1204, 1203, 1202, 1201, 1200, 1199, 1198, 1197, 1196, 1195, 1194, 1193, 1192, 1191, 1190, 1189, 1188, 1187, 1186, 1185, 1184, 1183, 1182, 1181, 1180, 1179, 1178, 1177, 1176, 1175, 1174, 1173, 1172, 1171, 1170, 1169, 1168, 1167, 1166, 1165, 1164, 1163, 1162, 1161, 1160, 1159, 1158, 1157, 1156, 1155, 1154, 1153, 1152, 1151, 1150, 1149, 1148, 1147, 1146, 1145, 1144, 1143, 1142, 1141, 1140, 1139, 1138, 1137, 1136, 1135, 1134, 1133, 1132, 1131, 1130, 1129, 1128, 1127, 1126, 1125, 1124, 1123, 1122, 1121, 1120, 1119, 1118, 1117, 1116, 1115, 1114, 1113, 1112, 1111, 1110, 1109, 1108, 1107, 1106, 1105, 1104, 1103, 1102, 1101, 1100, 1099, 1098, 1097, 1096, 1095, 1094, 1093, 1092, 1091, 1090, 1089, 1088, 1087, 1086, 1085, 1084, 1083, 1082, 1081, 1080, 1079, 1078, 1077, 1076, 1075, 1074, 1073, 1072, 1071, 1070, 1069, 1068, 1067, 1066, 1065, 1064, 1063, 1062, 1061, 1060, 1059, 1058, 1057, 1056, 1055, 1054, 1053, 1052, 1051, 1050, 1049, 1048, 1047, 1046, 1045, 1044, 1043, 1042, 1041, 1040, 1039, 1038, 1037, 1036, 1035, 1034, 1033, 1032, 1031, 1030, 1029, 1028, 1027, 1026, 1025, 1024, 1023, 1022, 1021, 1020, 1019, 1018, 1017, 1016, 1015, 1014, 1013, 1012, 1011, 1010, 1009, 1008, 1007, 1006, 1005, 1004, 1003, 1002, 1001, 1000, 999, 998, 997, 996, 995, 994, 993, 992, 991, 990, 989, 988, 987, 986, 985, 984, 983, 982, 981, 980, 979, 978, 977, 976, 975, 974, 973, 972, 971, 970, 969, 968, 967, 966, 965, 964, 963, 962, 961, 960, 959, 958, 957, 956, 955, 954, 953, 952, 951, 950, 949, 948, 947, 946, 945, 944, 943, 942, 941, 940, 939, 938, 937, 936, 935, 934, 933, 932, 931, 930, 929, 928, 927, 926, 925, 924, 923, 922, 921, 920, 919, 918, 917, 916, 915, 914, 913, 912, 911, 910, 909, 908, 907, 906, 905, 904, 903, 902, 901, 900, 899, 898, 897, 896, 895, 894, 893, 892, 891, 890, 889, 888, 887, 886, 885, 884, 883, 882, 881, 880, 879, 878, 877, 876, 875, 874, 873, 872, 871, 870, 869, 868, 867, 866, 865, 864, 863, 862, 861, 860, 859, 858, 857, 856, 855, 854, 853, 852, 851, 850, 849, 848, 847, 846, 845, 844, 843, 842, 841, 840, 839, 838, 837, 836, 835, 834, 833, 832, 831, 830, 829, 828, 827, 826, 825, 824, 823, 822, 821, 820, 819, 818, 817, 816, 815, 814, 813, 812, 811, 810, 809, 808, 807, 806, 805, 804, 803, 802, 801, 800, 799, 798, 797, 796, 795, 794, 793, 792, 791, 790, 789, 788, 787, 786, 785, 784, 783, 782, 781, 780, 779, 778, 777, 776, 775, 774, 773, 772, 771, 770, 769, 768, 767, 766, 765, 764, 763, 762, 761, 760, 759, 758, 757, 756, 755, 754, 753, 752, 751, 750, 749, 748, 747, 746, 745, 744, 743, 742, 741, 740, 739, 738, 737, 736, 735, 734, 733, 732, 731, 730, 729, 728, 727, 726, 725, 724, 723, 722, 721, 720, 719, 718, 717, 716, 715, 714, 713, 712, 711, 710, 709, 708, 707, 706, 705, 704, 703, 702, 701, 700, 699, 698, 697, 696, 695, 694, 693, 692, 691, 690, 689, 688, 687, 686, 685, 684, 683, 682, 681, 680, 679, 678, 677, 676, 675, 674, 673, 672, 671, 670, 669, 668, 667, 666, 665, 664, 663, 662, 661, 660, 659, 658, 657, 656, 655, 654, 653, 652, 651, 650, 649, 648, 647, 646, 645, 644, 643, 642, 641, 640, 639, 638, 637, 636, 635, 634, 633, 632, 631, 630, 629, 628, 627, 626, 625, 624, 623, 622, 621, 620, 619, 618, 617, 616, 615, 614, 613, 612, 611, 610, 609, 608, 607, 606, 605, 604, 603, 602, 601, 600, 599, 598, 597, 596, 595, 594, 593, 592, 591, 590, 589, 588, 587, 586, 585, 584, 583, 582, 581, 580, 579, 578, 577, 576, 575, 574, 573, 572, 571, 570, 569, 568, 567, 566, 565, 564, 563, 562, 561, 560, 559, 558, 557, 556, 555, 554, 553, 552, 551, 550, 549, 548, 547, 546, 545, 544, 543, 542, 541, 540, 539, 538, 537, 536, 535, 534, 533, 532, 531, 530, 529, 528, 527, 526, 525, 524, 523, 522, 521, 520, 519, 518, 517, 516, 515, 514, 513, 512, 511, 510, 509, 508, 507, 506, 505, 504, 503, 502, 501, 500, 499, 498, 497, 496, 495, 494, 493, 492, 491, 490, 489, 488, 487, 486, 485, 484, 483, 482, 481, 480, 479, 478, 477, 476, 475, 474, 473, 472, 471, 470, 469, 468, 467, 466, 465, 464, 463, 462, 461, 460, 459, 458, 457, 456, 455, 454, 453, 452, 451, 450, 449, 448, 447, 446, 445, 444, 443, 442, 441, 440, 439, 438, 437, 436, 435, 434, 433, 432, 431, 430, 429, 428, 427, 426, 425, 424, 423, 422, 421, 420, 419, 418, 417, 416, 415, 414, 413, 412, 411, 410, 409, 408, 407, 406, 405, 404, 403, 402, 401, 400, 399, 398, 397, 396, 395, 394, 393, 392, 391, 390, 389, 388, 387, 386, 385, 384, 383, 382, 381, 380, 379, 378, 377, 376, 375, 374, 373, 372, 371, 370, 369, 368, 367, 366, 365, 364, 363, 362, 361, 360, 359, 358, 357, 356, 355, 354, 353, 352, 351, 350, 349, 348, 347, 346, 345, 344, 343, 342, 341, 340, 339, 338, 337, 336, 335, 334, 333, 332, 331, 330, 329, 328, 327, 326, 325, 324, 323, 322, 321, 320, 319, 318, 317, 316, 315, 314, 313, 312, 311, 310, 309, 308, 307, 306, 305, 304, 303, 302, 301, 300, 299, 298, 297, 296, 295, 294, 293, 292, 291, 290, 289, 288, 287, 286, 285, 284, 283, 282, 281, 280, 279, 278, 277, 276, 275, 274, 273, 272, 271, 270, 269, 268, 267, 266, 265, 264, 263, 262, 261, 260, 259, 258, 257, 256, 255, 254, 253, 252, 251, 250, 249, 248, 247, 246, 245, 244, 243, 242, 241, 240, 239, 238, 237, 236, 235, 234, 233, 232, 231, 230, 229, 228, 227, 226, 225, 224, 223, 222, 221, 220, 219, 218, 217, 216, 215, 214, 213, 212, 211, 210, 209, 208, 207, 206, 205, 204, 203, 202, 201, 200, 199, 198, 197, 196, 195, 194, 193, 192, 191, 190, 189, 188, 187, 186, 185, 184, 183, 182, 181, 180, 179, 178, 177, 176, 175, 174, 173, 172, 171, 170, 169, 168, 167, 166, 165, 164, 163, 162, 161, 160, 159, 158, 157, 156, 155, 154, 153, 152, 151, 150, 149, 148, 147, 146, 145, 144, 143, 142, 141, 140, 139, 138, 137, 136, 135, 134, 133, 132, 131, 130, 129, 128, 127, 126, 125, 124, 123, 122, 121, 120, 119, 118, 117, 116, 115, 114, 113, 112, 111, 110, 109, 108, 107, 106, 105, 104, 103, 102, 101, 100, 99, 98, 97, 96, 95, 94, 93, 92, 91, 90, 89, 88, 87, 86, 85, 84, 83, 82, 81, 80, 79, 78, 77, 76, 75, 74, 73, 72, 71, 70, 69, 68, 67, 66, 65, 64, 63, 62, 61, 60, 59, 58, 57, 56, 55, 54, 53, 52, 51, 50, 49, 48, 47, 46, 45, 44, 43, 42, 41, 40, 39, 38, 37, 36, 35, 34, 33, 32, 31, 30, 29, 28, 27, 26, 25, 24, 23, 22, 21, 20, 19, 18, 17, 16, 15, 14, 13, 12, 11, 10, 9, 8, 7, 6, 5, 4, 3, 2, 1, 0

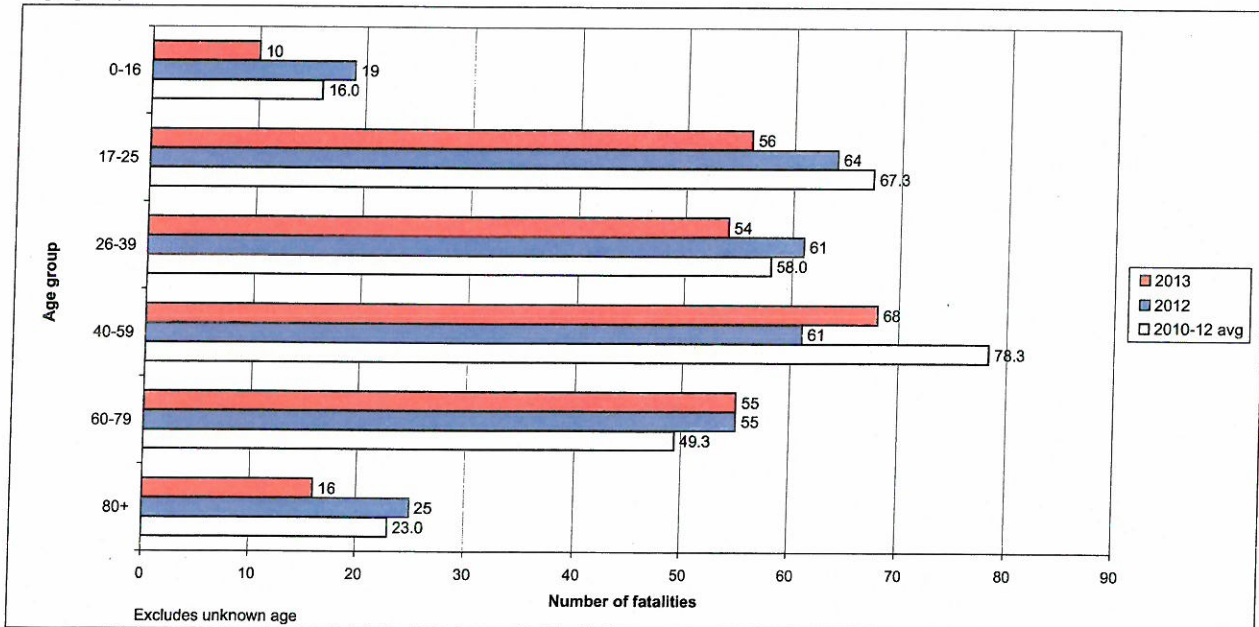
## Road user class



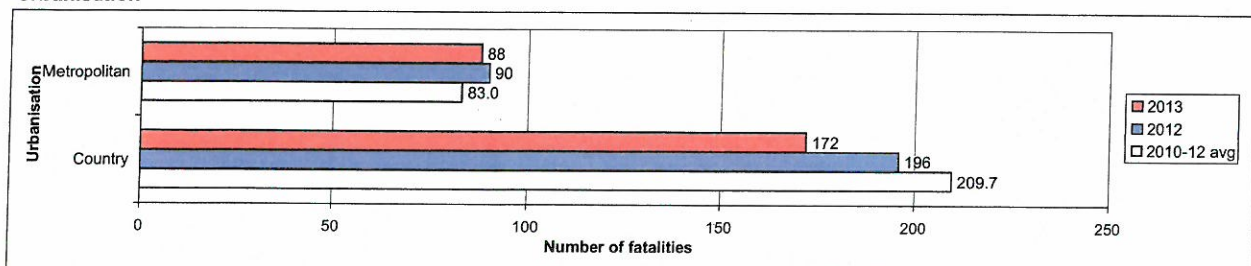
## Gender



## Age group



## Urbanisation



**Road fatality comparative statistics for the period 1 January to 09 October 2012, 2013  
and the average for the same period in 2010, 2011 and 2012**

**Road user class**

	2013	2012	+/-	% change	3-year average
Driver	127	124	3	2%	135.7
Motorcyclist	54	50	4	8%	46.7
Passenger	34	60	-26	-43%	58.3
Pedal cyclist	12	7	5	71%	7.7
Pedestrian	33	45	-12	-27%	44.3

Motorcyclist & pedal cyclist includes passenger

**NSW ICAC  
EXHIBIT**

**Gender**

	2013	2012	+/-	% change	3-year average
Male	190	206	-16	-8%	200.7
Female	70	80	-10	-13%	72.3

Excludes unknown gender

**Age group**

	2013	2012	+/-	% change	3-year average
0-16	10	19	-9	-47%	16.0
17-25	56	64	-8	-13%	67.3
26-39	54	61	-7	-11%	58.0
40-59	68	61	7	11%	78.3
60-79	55	55	0	0%	49.3
80+	16	25	-9	-36%	23.0

Excludes unknown age

**Urbanisation**

	2013	2012	+/-	% change	3-year average
Metropolitan	88	90	-2	-2%	83.0
Country	172	196	-24	-12%	209.7



Road Toll Update for NSW  
up to and including  
Wednesday, 09 October 2013

## NSW ICAC EXHIBIT

Fatalities advised since last update issued: 1

Fatalities excluded since last update issued: 0

	CALENDAR YEAR TO MIDNIGHT 09 October					12-MONTH PERIOD ENDING 09 October				
	2013 (Prelim)	2012 (Final)	DIFF.	3-YEAR AVERAGE	DIFF.	2013 (Prelim)	2012 (Final)	DIFF.	3-YEAR AVERAGE	DIFF.
<b>Fatal crashes</b>	<b>245</b>	<b>261</b>	<b>-16</b>	<b>266</b>	<b>-21</b>	<b>320</b>	<b>346</b>	<b>-26</b>	<b>350</b>	<b>-30</b>
<b>Fatalities</b>										
Driver	127	124	3	136	-9	167	167	0	178	-11
Passenger	34	60	-26	58	-24	56	84	-28	84	-28
Motorcyclist*	54	50	4	47	7	65	61	4	59	6
Pedestrian	33	45	-12	44	-11	43	57	-14	55	-12
Pedal cyclist*	12	7	5	8	4	12	8	4	10	2
Other	0	0	0	0	0	0	0	0	0	0
<b>TOTAL KILLED</b>	<b>260</b>	<b>286</b>	<b>-26</b>	<b>293</b>	<b>-33</b>	<b>343</b>	<b>377</b>	<b>-34</b>	<b>386</b>	<b>-43</b>

\* Includes passengers

**FINAL 2012 TOTALS:** Fatal crashes 336 Fatalities 369

Preliminary Data -Note: Fatalities will be removed from statistics if subsequent Police or Coronial investigation shows that they did not fall within National reporting guidelines. Fatalities will be added from a crash occurring prior to today's date where a person subsequently dies within 30 days or the crash is reported late. Typically, these variations may result in a statewide annual decrease of up to 12 fatalities from the initial preliminary figure.

[Click here](#) for monthly crash statistics

[Click here](#) for more information about traffic crash statistics

[Click here](#) for more information about the Centre for Road Safety